

BH1880R

Beacon Hill Recycled Plastic 6' Contour Bench



Material

The contour bench is composed of 1" x 3.5" (1" x 4" nominal dimensions) recycled plastic seat and back planks made of 95% recycled content by weight along with aluminum accent planks.

Armrest and legs are made of cast iron with steel under supports. Bench seat will support 200 lbs. per linear foot.

Features

The armrests have individual right end and left end orientation.

The bench is designed to be portable for flexibility in placement or surface mounted using pre-drilled .5" diameter holes in the feet to prevent movement. **Mounting hardware is not included.**

Finish

The recycled plastic planks are impervious to moisture and corrosion, do not require the application of sealants or preservatives, and will never need painting or staining throughout the product's life.

Rust-proof aluminum and rust-resistant primed steel components feature a fade-resistant powder coating. Treated components exceed the industry standard by 34% in testing by independent sources.

Assembly

This product ships fully assembled and ready-to-use. Assembly includes stainless steel hardware.

Color

See website or sales representative for color choices.

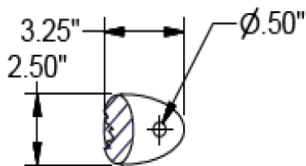
Maintenance

The product is virtually maintenance-free and requires only periodic cleaning with a sponge and a solution of mild detergent and water to remove surface dirt. Do not clean with solvent or petroleum base products.

Warranty

20-year limited structural warranty, 20-year warranty on recycled plastic, and 3-year finish warranty on powder coated steel and aluminum; 7-year warranty against fading from the date of purchase. See full details on multi-year warranties for components at anovafurnishings.com/warranty.

Manufactured in the U.S.



SECTION A-A
4X FOOT MOUNT

